



Management Plan of Peam Krasop Wildlife Sanctuary (PKWS), Cambodia

1st Asian Park Congress, Sendai, Japan

13th -17th November 2013

Srey Sunleang, MoE

Kong Kimsreng

Senior Program Officer, IUCN Cambodia

Email: kimsreng.kong@iucn.org



Contents

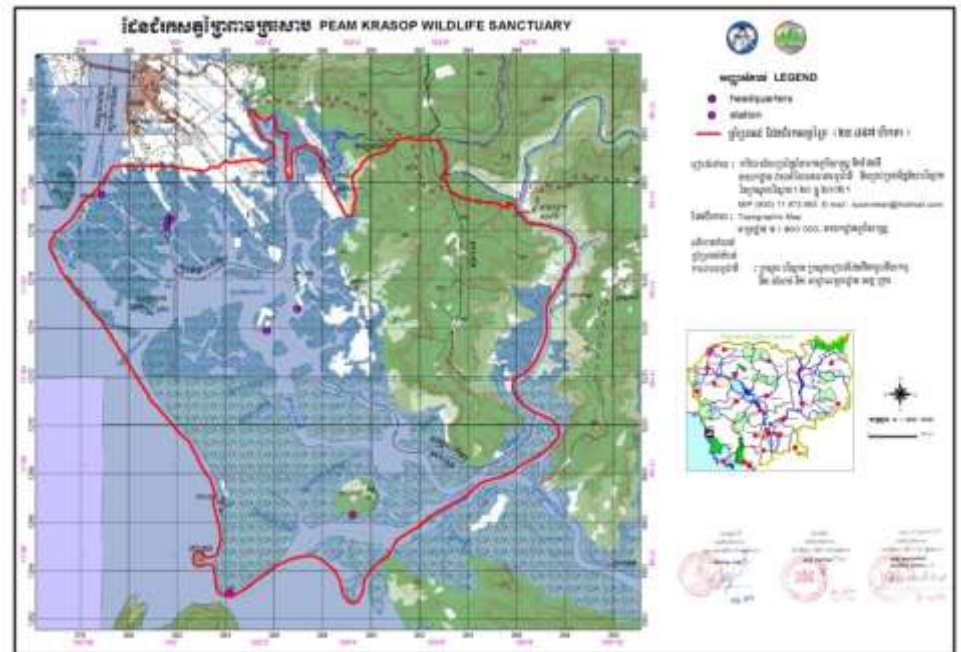
- Background of PKWS
- Threats to PKWS
- Why are PKWS Zoning and Management Plan Important? How?
- Communication and Advocacy Efforts Leading to Zoning and PKWS Management Success



Background of Peam Krasop Wildlife Sanctuary

1. Located in south-western Cambodia in Koh Kong Province
2. Established in 1993 by Royal Degree, covering the area of **25,897** hectare to protect part of one of the most important mangrove areas in Cambodia.
3. About 9,000 people are living in this sanctuary and depend on ecological services to sustain their fisheries-based livelihoods

Map of Peam Krasop Wildlife Sanctuary





Threats and Challenges to PKWS in 1990s





Current Threats to PKWS



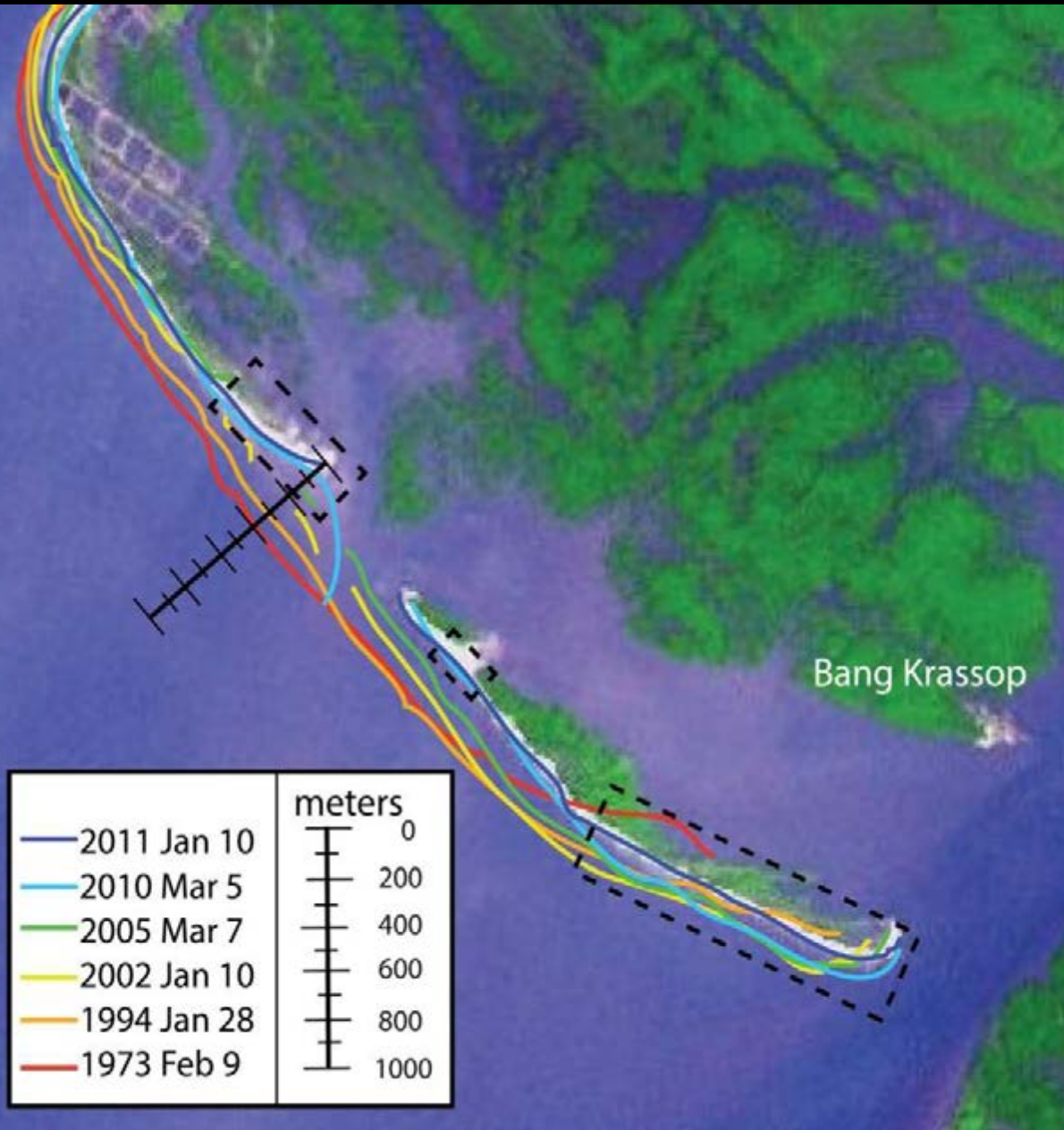
-
-

Severe landward beach migration

Destruction of mangrove habitat caused by erosion in Peam Krasop and Koh Kachang Beach in PKWS



Beach migration



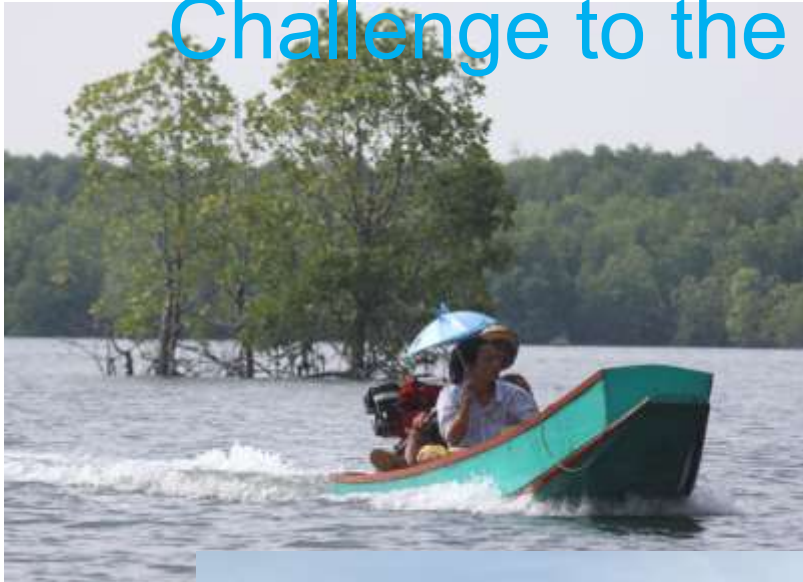
➤ Maximum beach barrier migration landwards is 390 m between 1973 and 2011 (10.3 m per year)

➤ Mangrove forest loss due to beach barrier migration is 0.60 km² since 1973

➤ The most rapid rate of migration is during the most recent period



Challenge to the use of water navigation





Limited Access to Freshwater





Threats to livelihoods in PKWS





Development of PKWS Management Plan is Crucial to effective Management of Protected Area





Why PKWS Zoning and management Plan important? How?

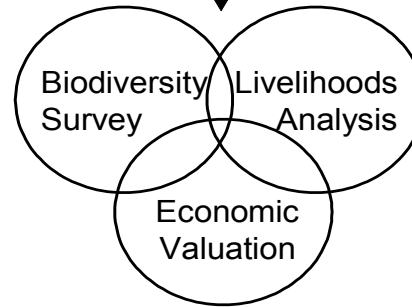
*DETAILED
PLANNING
CONCEPTUAL
INTEGRATION
RESEARCH
FIELD SURVEY*

*DATA PROCESSING
AND ANALYSIS
REPORT*

PRESENTATION

Integrated Management Objectives

Jointly Derived Research/Management Questions



INTEGRATED REPORT

**INTEGRATED BIODIVERSITY, VALUATION AND LIVELIHOOD
INFORMATION AND MANAGEMENT ADVICE**

Management Plan



Identified differences of purposes of zones





Communication and Advocacy Efforts Leading to Zoning and PKWS Management Success



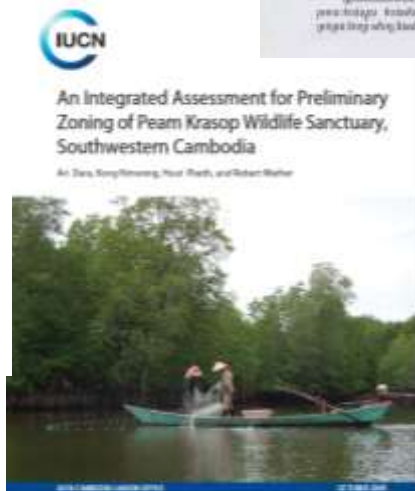
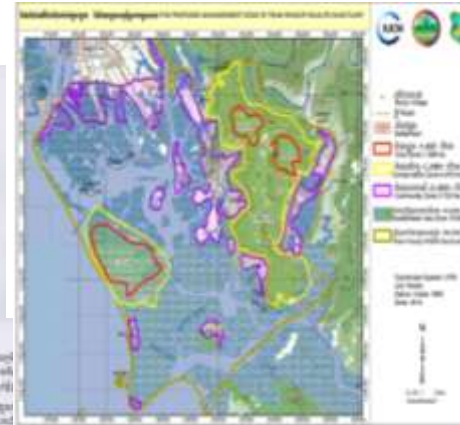
Report on the socio-economic status of households in Peam Krasop Wildlife Sanctuary and the contribution of the benefits of co-management regimes to poverty alleviation

An analysis focusing on Peam Krasop (Wetland), Peam Krasop District, Kampong Speu Province, Cambodia

1 April 2017



IUCN - The World Conservation Union





Thank you!

